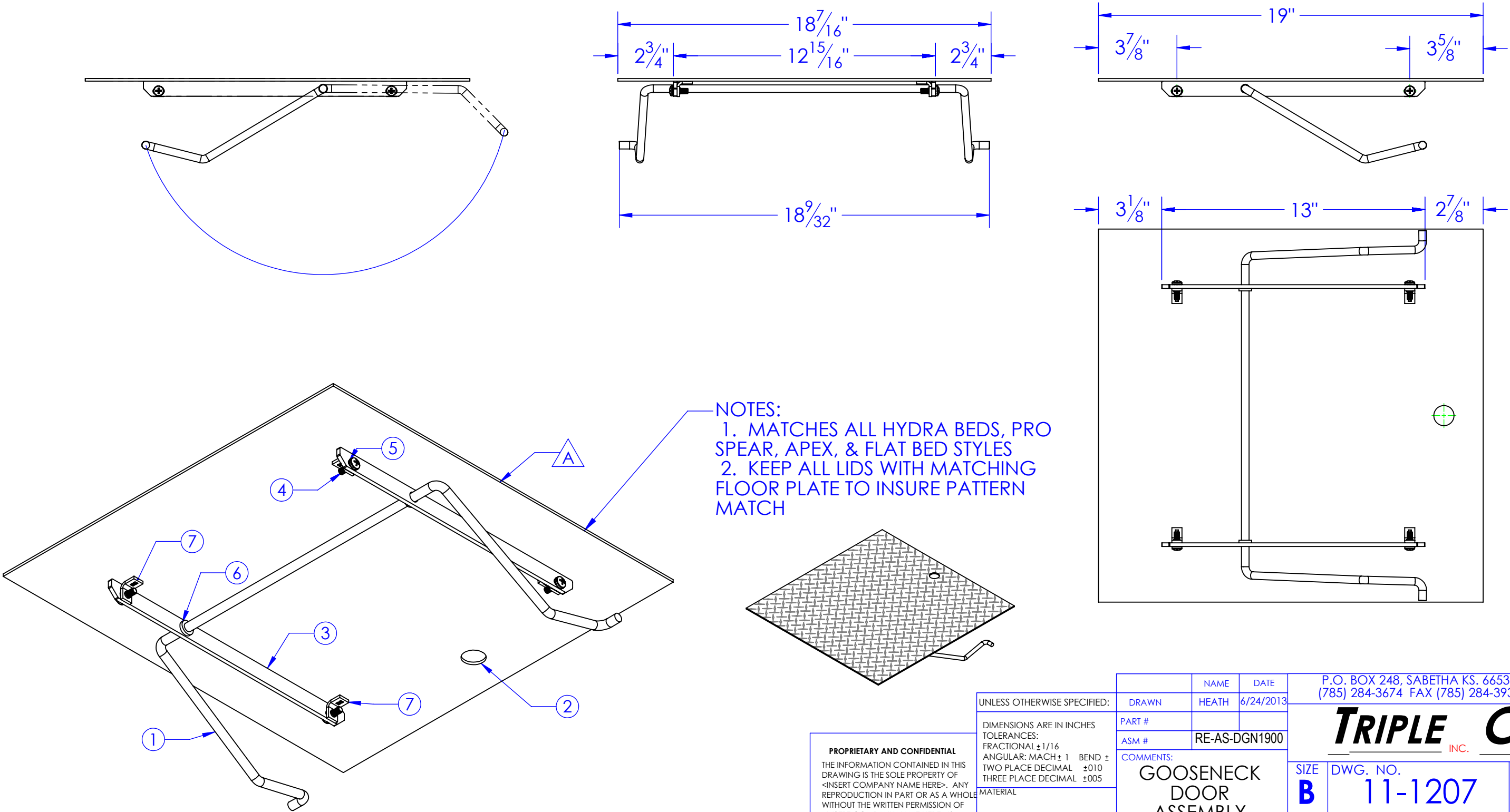


ITEM NO.	PART NUMBER	DESCRIPTION	DRAWING #	Default/Q TY.
1	FP-DGN-PR100	GOOSE NECK DOOR PIVOT ROD	10-2209	1
2	FP-FLPL-HB-LID	FLOOR PLATE LID HYDRA BED	STANDARD HYDRA BED FLOOR	1
3	FP-GND-102	5TH WHEEL DOOR PIVOT RAIL	10-2200	2
4	HD-BO-1/4-3/4 BHCS	BOLT 1/4-3/4 PAN HEAD	STOCK	4
5	HD-LW EX TOOTH	EXTERNAL TOOTH LOCK WASHER	STOCK	4
6	HD-SHM .375x.625x.12	SHIM, 3/8 IDx5/8 OD	STOCK	2
7	HD-WOB.25-20	WELD ON BRKT 1/4-20	STOCK	4

REV.	REVISIONS DESCRIPTION	DATE	APPROVED
A	INITIAL RELEASE FROM 10-1201 B	6/21/2013	



NOTES:
1. MATCHES ALL HYDRA BEDS, PRO
SPEAR, APEX, & FLAT BED STYLES
2. KEEP ALL LIDS WITH MATCHING
FLOOR PLATE TO INSURE PATTERN
MATCH

PROPRIETARY AND CONFIDENTIAL
THE INFORMATION CONTAINED IN THIS
DRAWING IS THE SOLE PROPERTY OF
<INSERT COMPANY NAME HERE>. ANY
REPRODUCTION IN PART OR AS A WHOLE
WITHOUT THE WRITTEN PERMISSION OF
<INSERT COMPANY NAME HERE> IS
PROHIBITED.

UNLESS OTHERWISE SPECIFIED:
DIMENSIONS ARE IN INCHES
TOLERANCES:
FRACTIONAL $\pm 1/16$
ANGULAR: MACH ± 1 BEND \pm
TWO PLACE DECIMAL ± 0.10
THREE PLACE DECIMAL ± 0.005
MATERIAL
DO NOT SCALE DRAWING

DRAWN	NAME	DATE	P.O. BOX 248, SABETHA KS. 66534 (785) 284-3674 FAX (785) 284-3931		
PART #	HEATH	6/24/2013	TRIPLE C INC.		
ASM #	RE-AS-DGN1900				
COMMENTS: GOOSENECK DOOR ASSEMBLY			SIZE B	DWG. NO. 11-1207	REV A
			SCALE: 1:5	WEIGHT: 14.58	SHEET 1 OF 1